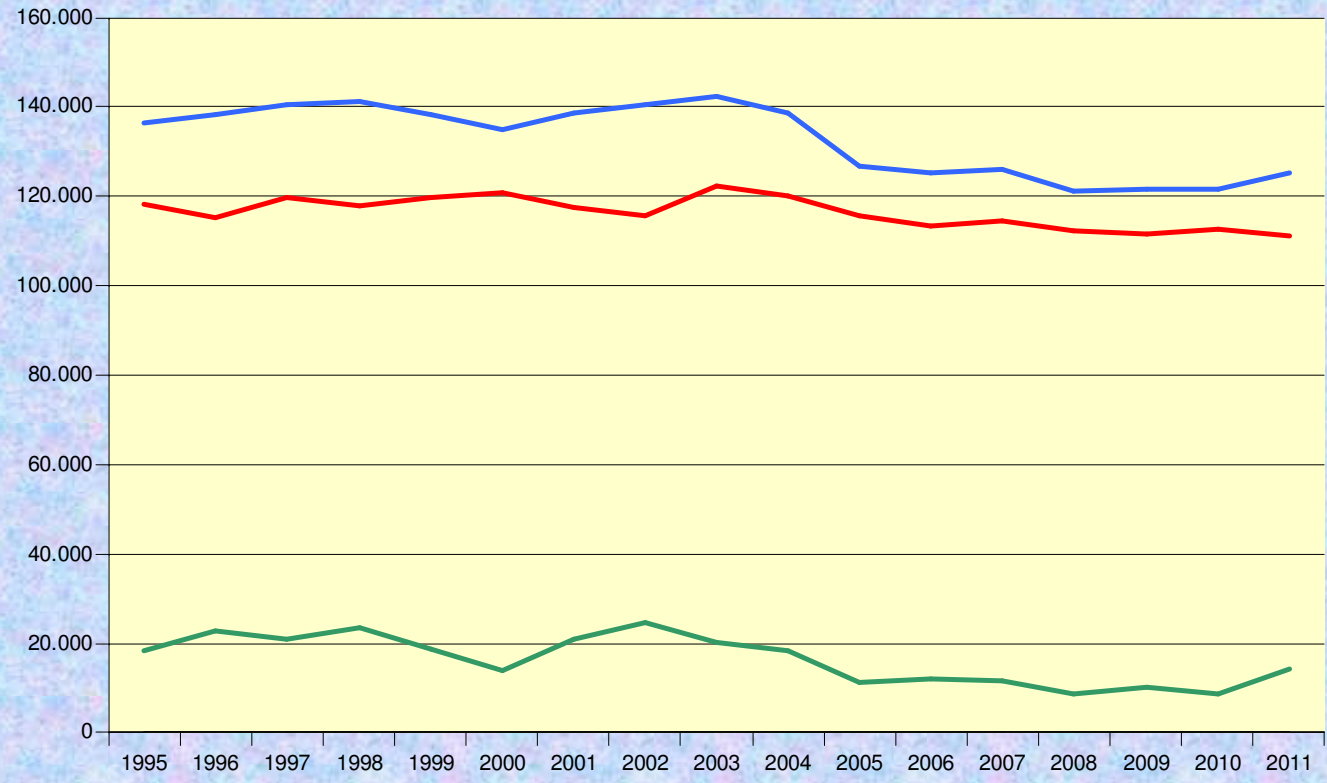


Wasserzahlen 1995 - 2011



	1995	1996	1997	1998	1999	2000	2001	2002	2003	2004	2005	2006	2007	2008	2009	2010	2011
■ Wasserverlust	18.300	22.913	20.863	23.521	18.809	14.033	20.933	24.642	20.236	18.484	11.332	11.919	11.672	8.771	10.304	8.731	14.245
■ prozentual	13,4%	16,6%	14,8%	16,6%	13,6%	10,4%	15,1%	17,6%	14,2%	13,3%	8,9%	9,5%	9,2%	7,2%	8,5%	7,2%	11,4%
■ Verkaufsmenge	118.271	115.283	119.748	117.866	119.551	121.020	117.542	115.703	122.254	120.158	115.497	113.439	114.524	112.266	111.382	112.709	111.211
■ Wasserverlauf	136.571	138.196	140.611	141.387	138.360	135.053	138.475	140.345	142.490	138.642	126.829	125.358	126.196	121.037	121.686	121.440	125.456